

Department of Health

**Biospatial – Transport Dashboard
(Patient Offload Times)
Version 2.0**



Biospatial – Transport Dashboard

Biospatial Transport Dashboard Introduction Focus on Pt Off Load Time

- How to use Demand Analysis
- Data Explorer Widget
- How to use EMS Transport Widget

Biospatial – Transport Dashboard

Demand Analysis Widget

Set filter/search toolbar (Left side, user defined filters)

- Set Agency
- Set Date Range: *Last “n”14 Days (Used defined)*
- Service Category: *911 Response*

Demand Analysis Widget

This widget deploys two views: Demand Heat Map (Top) by day/time, secondly Demand Timeline Metric over Volume (Lower).

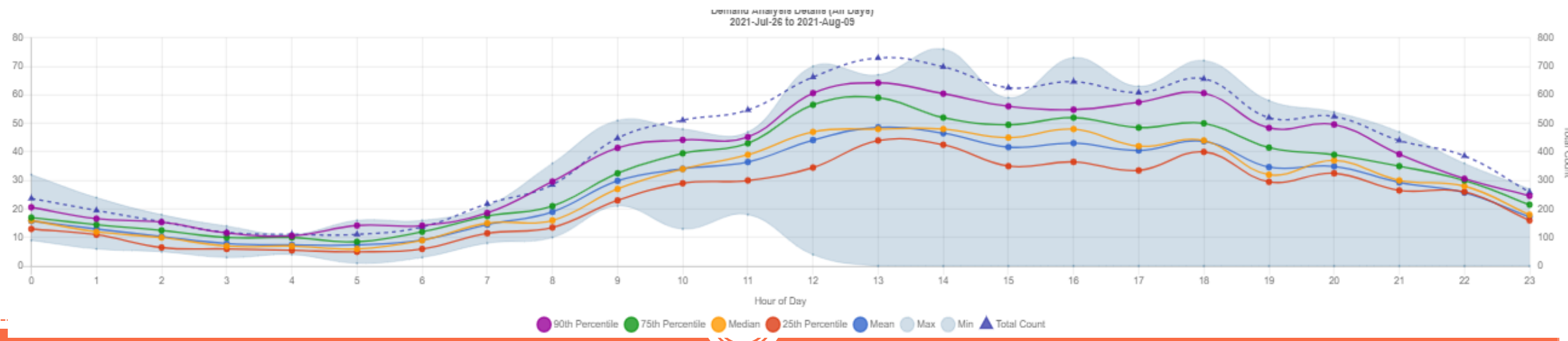
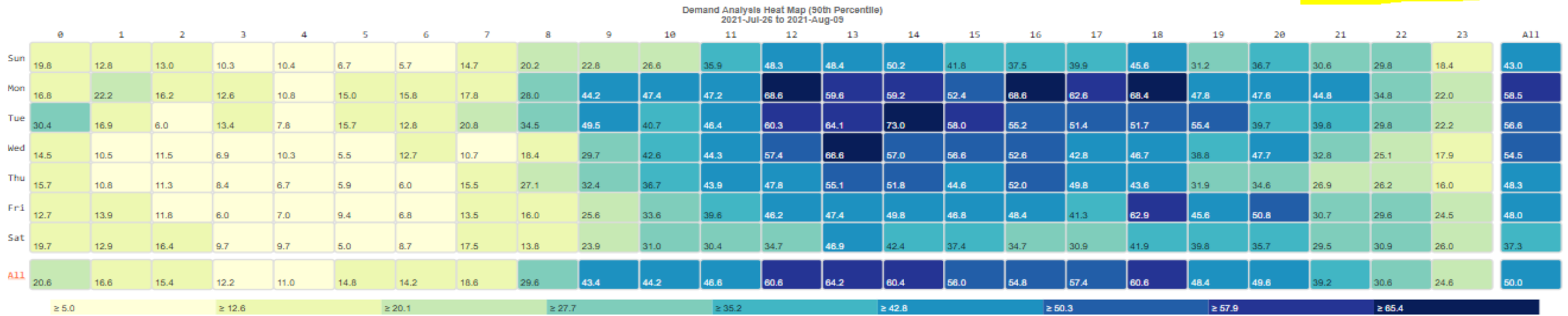
Demand Heat Map (Top) widget is used to visualize compression of incidents “Demand”, X = day of the week, Y = hour of day based on user selected metric.

Metrics: *Min, Max, Mean, Median, Percentiles (25,75,90).*

Demand Timeline (Bottom) is used to visualize the metrics over the user define time range, Over the total volume. (Note total volume is relational if any syndromes are selected)

Biospatial – Transport Dashboard

Metric: 90th Percentile



Biospatial – Transport Dashboard

The below example will produce a view of hospital incident *Pt Offload* counts that are equal or great then user defined threshold. (This example uses =>45 Minutes).

Search Tab (Left)

Set Agency:

Set Date Range: *Last 14 Days*

Service Category: *911 Response*

EMS Response Times: *Patient Off Load: Set Greater to Equal 45 Minutes (user defined threshold)*

In Data Explorer, Edit Widget

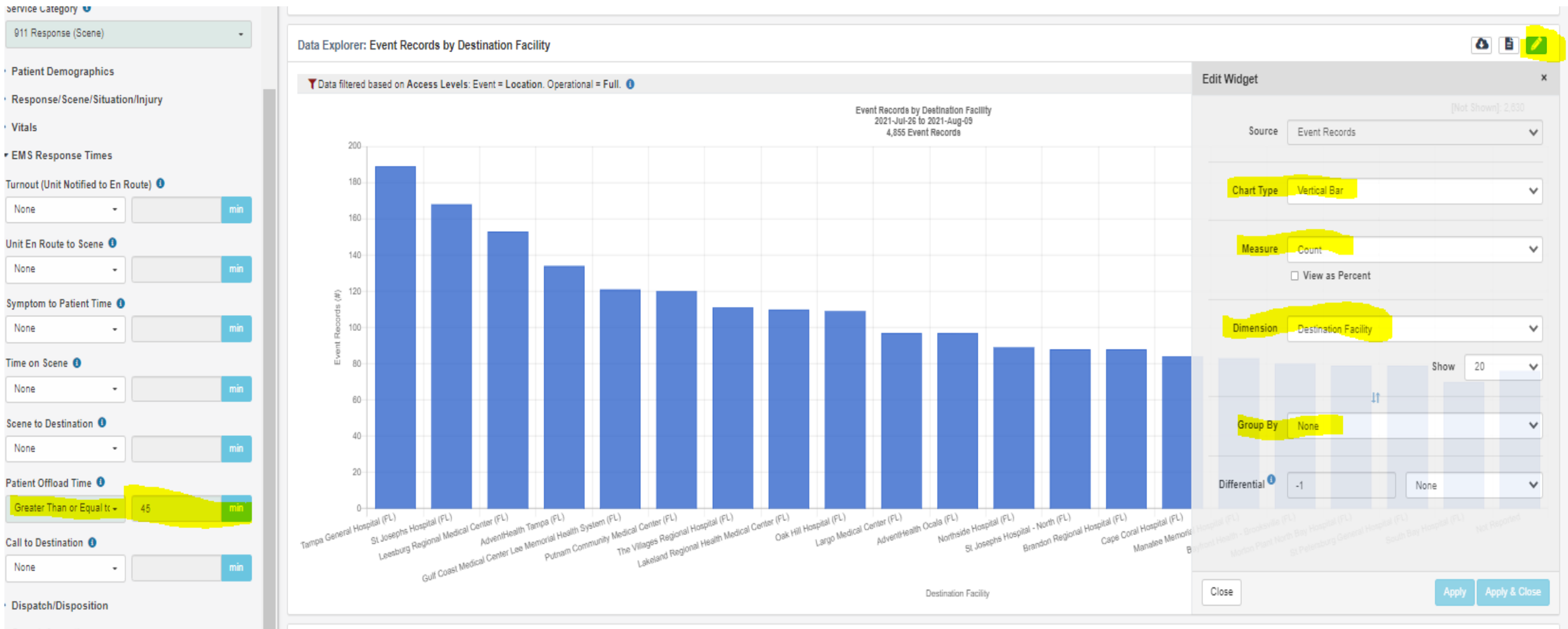
Chart Type: *User defined, recommend Vertical Bar*

Measure: *Count*

Dimension: *Destination Facility*

Group: *None*

Biospatial – Transport Dashboard



Biospatial – Transport Dashboard

Hospital Pt off load times based on user selected Metric. Metrics: Min, Max, Mean, Median, Percentiles (25,75,90).

Search Tab (Left)

Set Agency:

Set Date Range: *Last 14 days (User defined)*

Service Category: *911 Response*

EMS Response Times: *Leave all to None*

In Data Explorer, Edit Widget

Chart Type: User defined, recommend *Vertical Bar*

Measure: *Pt Offload Times* Metric: *User selected choice (this example is Mean = average)*

Dimension: *Destination Facility*

Group: None

Biospatial – Transport Dashboard

Service Category **1**
911 Response (Scene)

Patient Demographics

Response/Scene/Situation/Injury

Vitals

EMS Response Times

Turnout (Unit Notified to En Route) **1**

None min

Init En Route to Scene **1**

None min

Symptom to Patient Time **1**

None min

Time on Scene **1**

None min

Scene to Destination **1**

None min

Patient Offload Time **1**

None min

Call to Destination **1**

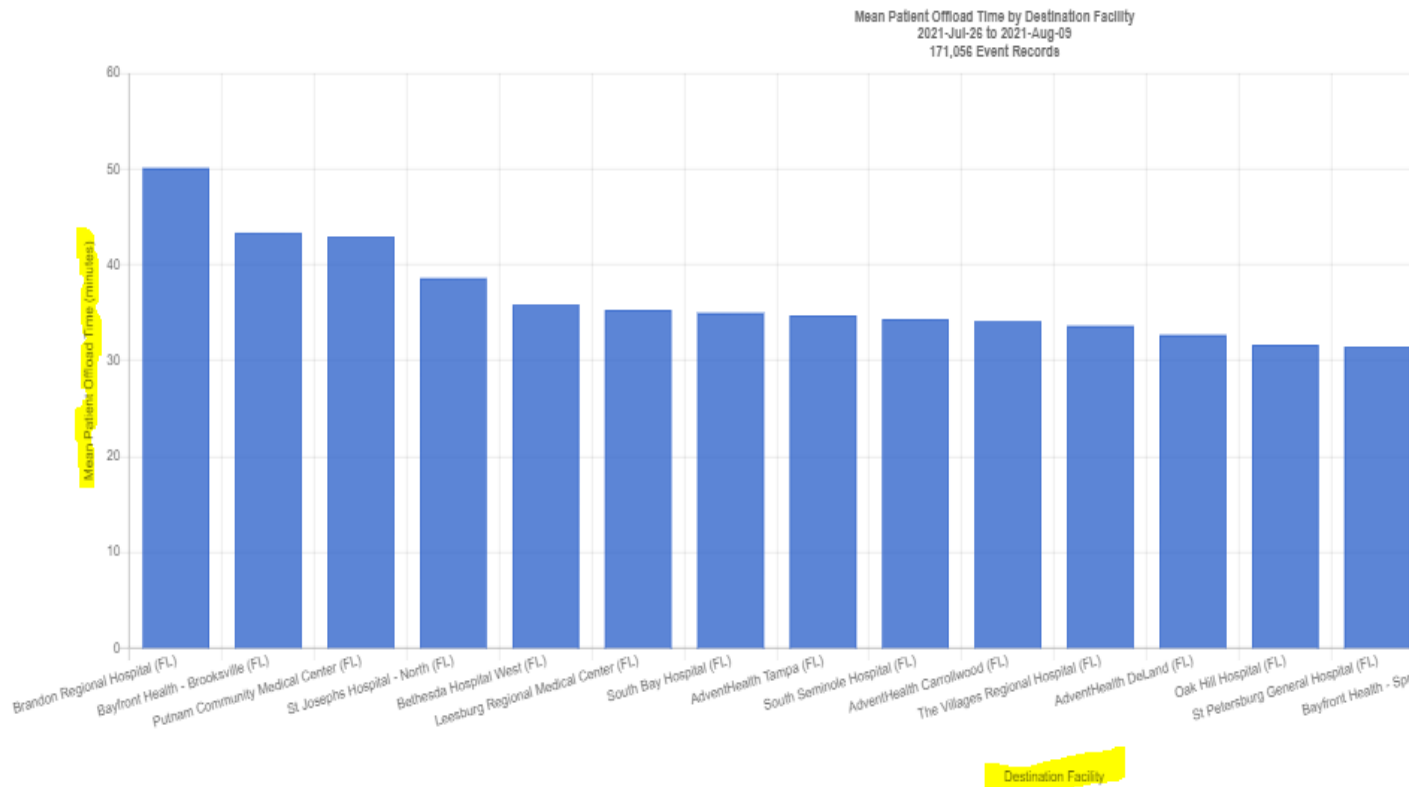
None min

Dispatch/Disposition

Crew Information

Data Explorer: Mean Patient Offload Time by Destination Facility

Data filtered based on Access Levels: Event = Location, Operational = Full **1**



Edit Widget **x**

Not Reported: 87,935
[Not Shown]: 75,539

Source: Event Records

Chart Type: Vertical Bar

Measure: Mean Patient Offload Time
requires access level: Operational = Full

Dimension: Destination Facility

Show: 20

Group By: None

Differential: -1 None

Close Apply Apply & Close

Biospatial – Transport Dashboard

EMS Response Time Widget

This widget deploys two views: Demand Heat Map (Top) day/time compression, Demand Timeline Metric over Volume (Lower). Very similar to previous Demand Widget, this Widget uses EMS Response Time (See pull down for full list) that the user can select versus a Metric. This example will use *“Pt Offload Time”*.

Search Tab (Left side, user defined filters)

- Set Agency
- Set Date Range (Used defined)
- Service Category: 911 Response

EMS Response Time Widget setting

- Edit Widget
- Metric: Mean (user selected)
- Time: *Pt. Off Load (Used selected, click blue circle with I for list of definitions)*
 - *Note: Some agencies do not collect Pt Transfer time, so use Back in Service Time.*

Biospatial – Transport Dashboard

EMS Response Times

Data filtered based on Access Levels: Event = Location, Operational = Full.

