

# Department of Health

**Biospatial – Advanced Dashboard  
(Introduction to Widgets)**



# Biospatial – Introduction

## Biospatial Advanced Dashboard Focus on Widget Use

### Widgets

- Map Widget
- Location Widget
- Data Explorer Widget
- Syndrome Counts by time (Timeline) Widget
- Age Gender Distribution
- Race/Ethnicity
- Records Table



# Biospatial – Introduction

## Widgets

“A widget displays the results of a dataset, allowing you to visualize data in different ways than traditional reports displayed as grids or graphs do. Widgets are sophisticated visualization techniques that can combine with rich interactivity to enable users to understand their data more effectively. Dashboard-style documents can display a variety of widget types, such as Gauge, Heat Map, and Stacked Area widgets. Although each type of widget looks different and is used in a unique way, the main purpose of all widgets remains the same: to provide a visual and interactive look into your data.”

[https://doc-archives.microstrategy.com/producthelp/10.1/WebUser/WebHelp/Lang\\_1033/Analyze\\_data\\_using\\_widgets.htm](https://doc-archives.microstrategy.com/producthelp/10.1/WebUser/WebHelp/Lang_1033/Analyze_data_using_widgets.htm)



# Biospatial – Introduction

## Map Widget

The Map widget is the top widget on the Advanced Search Dashboard. The map displays the data selected in the filter/search toolbar (Left). Mapping programs use “Layers”, first you start with a base map and layer extras on top. From any base map you can zoom until the incident appears (green dot). Click on the Dot to see event record. Note: As you zoom clusters appears, continue to zoom for single incident level.

To view these choices, click on the map fold button, top right of Map Widget.



**Base Map Type:** Dark, Light, Topographical, Satellite, Street base maps are available.

### Base Map View: (Two most commonly used Views)

**Absolute Count:** Based on zoom level, clusters appear with incident count and geographic area the cluster covers. This changes with each zoom level.

**Gradient Heat Map:** Provide heat map of incidents. Tip: Try using the filter/search tool bar to select a syndrome. Example: Select syndrome “Overdose” or “Cardiac Arrest”, the heat map will provide a focused view.



# Biospatial – Introduction

## Map Widget (Continued)

**Additional Map Layers:** Users can select as map layers desired. Use the pull-down list to view all the choices.

Tip: Adding too many layers when zoomed out may provide too much data for adequate view. Zoom closer when multiple layers are selected. Click on any object the layer provides for identification.

Advanced tip: If the agency has Arc GIS URL or KML/KMZ file of response zones, or any other agency specific GIS file may be added to the layer. Click the + for “Add/Edit Custom Layer”.

### **Binning/Play back View:**

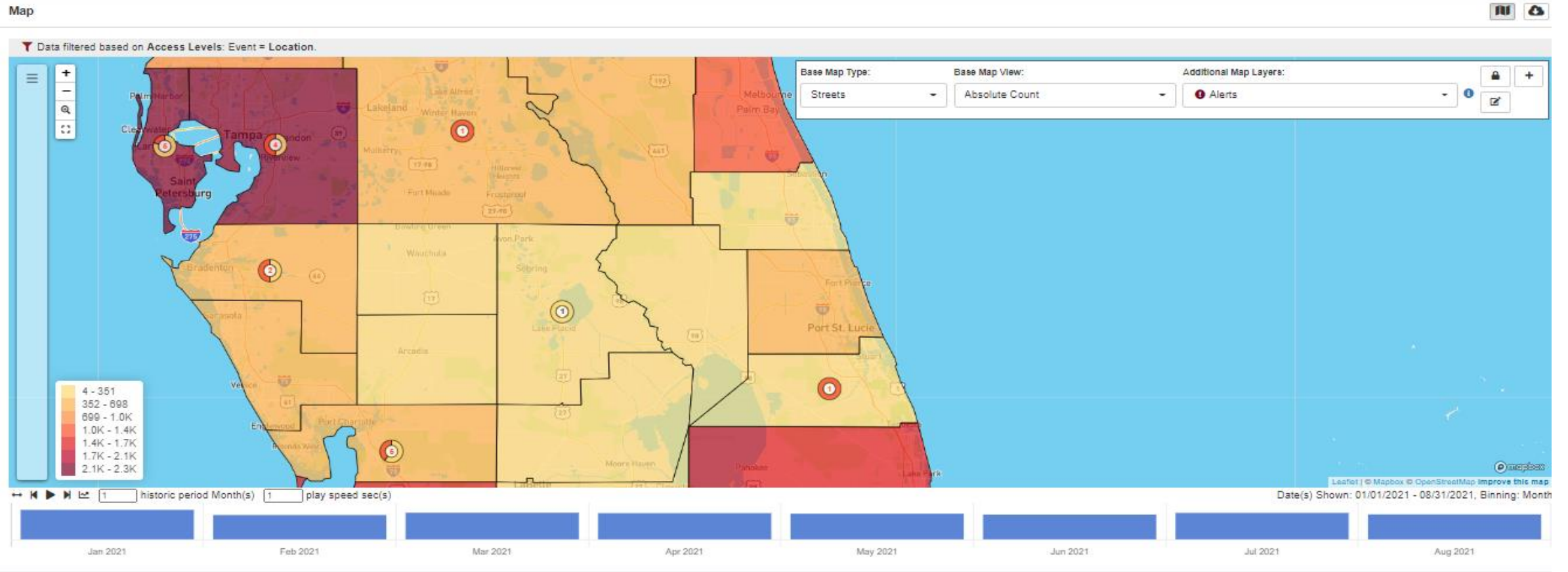
At the bottom of the Map Widget a vertical chart appears based on the Binning selected from the filter/search toolbar (Left). Select one of the vertical bars to view data in that bin period. Example: Set Bin to weeks, by selecting the vertical bar, the incidents for that week will be in view.

**Advanced tip:** Select syndrome “cardiac arrest”, bin by “week” - select the Play feature and the map will Playback the incidents as they occurred (by bin period, in this example –week). Zoom tightly to enjoy.



# Biospatial – Introduction

## Map Widget (Continued)



# Biospatial – Introduction

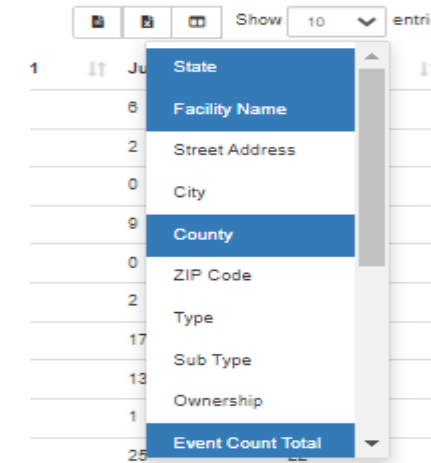
## Locations Widget

The locations widget is truly a benefactor of the “Binning” feature on the filter/search toolbar. Data is presented for each view based on the Bin selected on the filter/search toolbar.

**Select View:** There are many options for quick view of locations. “Incident” views are where the incident occurred, “Destination” views are the final pt. destination. **Tip:** Select Bin “month”, select view “Destination Facility”, your view is a quick list of destinations binned by month.



**Advanced Tip:** The data can be exported to a csv file or excel. To change the view of the columns, select the “Book” button (top right of widget) and choose the desired columns for the view.



# Biospatial – Introduction

## Locations Widget – Example: Selected view Destination Hospital

Locations ● Events ◆ Alerts

▼ Data filtered based on Access Levels: Event = Location.

2021-Jan-01 to 2021-Aug-31

Select View: Destination Facility  Show

Facility Name	Event Count Total	Jan 2021	Feb 2021	Mar 2021	Apr 2021
HealthPark Medical Center	74	18	7	9	8
Golisano Childrens Hospital of Southwest Florida	5	0	0	0	0
Baptist & Wolfson Oakleaf Emergency Room	4	1	1	0	1
Homestead Hospital	98	17	21	20	8
<b>Bethesda Hospital West</b>	<b>3</b>	<b>1</b>	<b>1</b>	<b>0</b>	<b>0</b>
AdventHealth TimberRidge ER	19	2	2	2	4
Parrish Medical Center	68	9	9	7	7
Dr P Phillips Hospital	87	14	5	13	6
West Florida Healthcare - Perdido Bay ER	11	1	1	1	5
Jackson South Medical Center	204	15	33	27	25



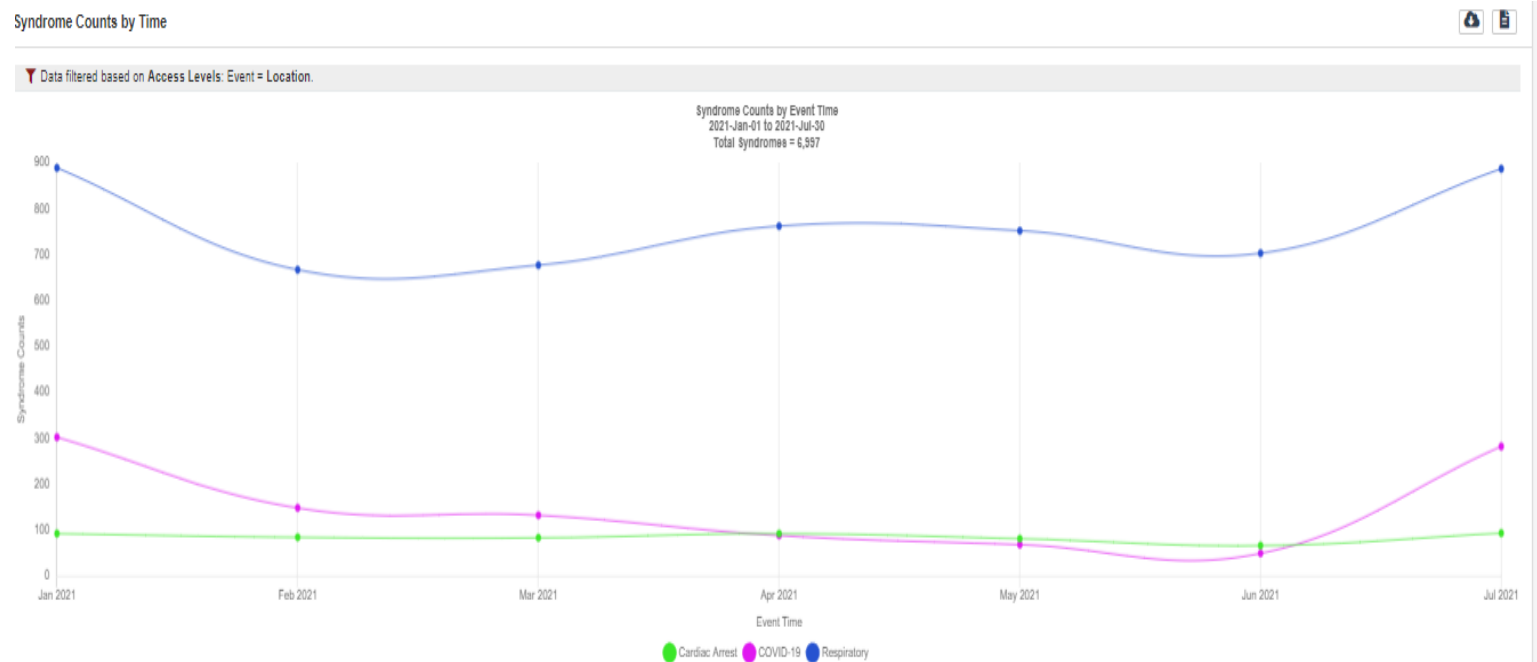
# Biospatial – Introduction

## Syndrome Counts by time (Timeline) Widget

The locations widget is also a benefactor of the “Binning” feature on the filter/search toolbar. Data is presented for each view based on the Bin selected displayed in a timeline view. You may select multiple Syndromes to be displayed.

**Example:** The graph displays a timeline of Covid19, Cardiac Arrest, and Respiratory Syndromes, to view if any relationship exists.

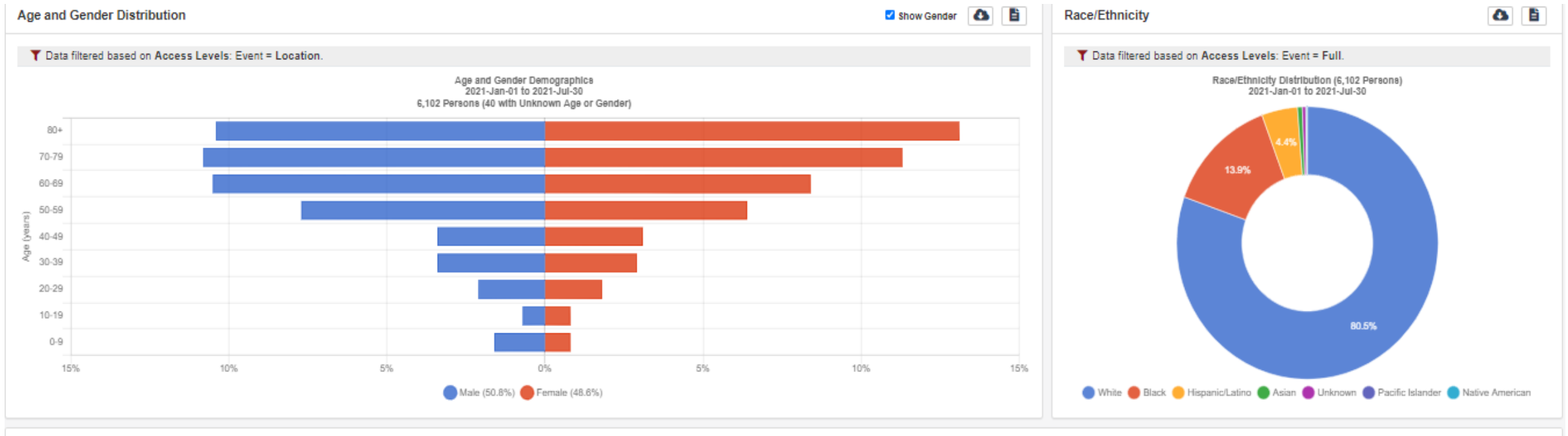
**Tip:** The bottom of graph displays the data elements, click one to remove or restore.



# Biospatial – Introduction

## Age Gender Distribution Race/Ethnicity

The Age/Gender Distribution and Race/Ethnicity Widgets are self explanatory. Uncheck “Show Gender” for an age distribution only. Click on any dimension below the graph to exclude that from the graph.



# Biospatial – Introduction

## Records Table

Load Records

The records table will load event and source records for the data selected in the filter/search toolbar. Once loaded, the records will be display with columns of data. Column selection can be made previously described by clicking the “Book” Column Visibility icon. The columns to be viewed are user selected. Data from the records table may be exported to a CSV file.

Records are presented as “Source” or “event”, both contain ePCR data. Source records are presented in the NEMESIS/EMSTARS Data Dictionary format. Event records are presented in a logical flow, like an ePCR chart. However, the event record may contain HIE hospital records “Relevant Hospital Records”. (See HIE Guide for complete details).